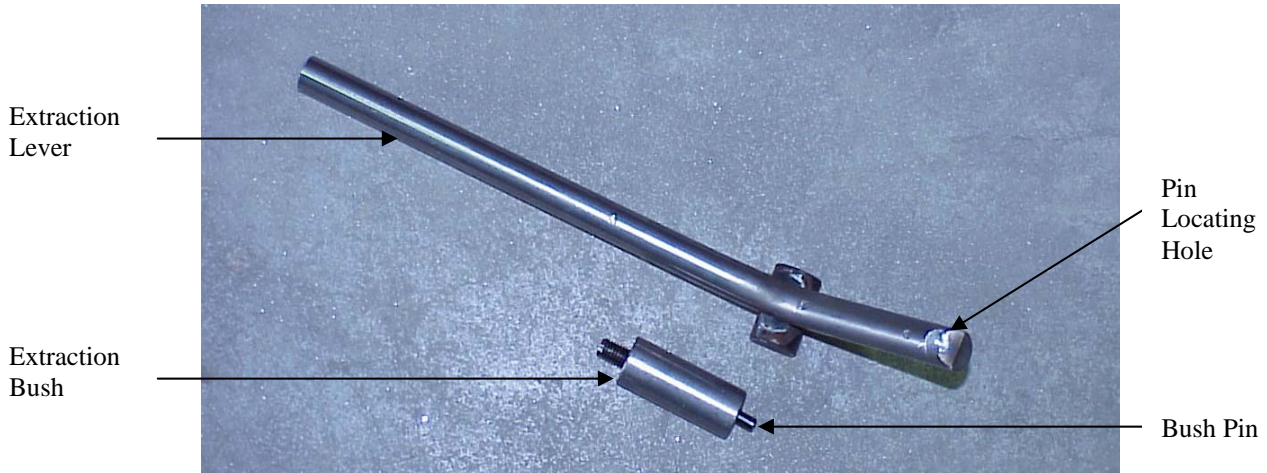


Instructions for removing the DVR3000 Headstock using the extraction lever

Publication code: 101-0513-009

Stock code: 55511



The DVR Headstock Extraction Lever is designed to assist customers in removing the DVR headstock from the lathe bed.

Box Contents

	Product code	Description	Quantity
1.	55505	Headstock Extraction Lever	1
2.	55506	Extraction Bush	1
3.	55511	Instructions	1

Procedure for use:

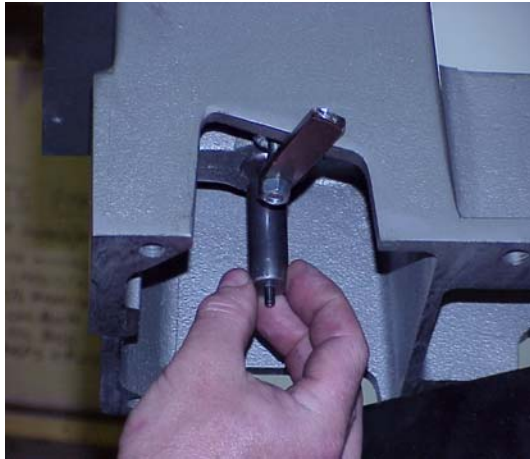
1. Unscrew and remove the bolts fastening the lathe bed to the stand or work bench. Leave the back middle bolt in position and slightly loosen nut so the lathe can swivel a few degrees to allow access under the main bed.



2. Unscrew and remove the retaining hex bolt and washer under the swivel pin.

Headstock Extraction Lever

Safe practises should always be employed to ensure the Health and Safety of yourself, employees and customers (if applicable) Refer to product manuals, exploded drawings and our website if further assistance is required, or contact us on service@teknatool.com



3. Screw the Extraction Bush into the thread that the retaining hex bolt was in. Screw until finger tight. Re-position lathe back onto stand or workbench and fasten at least one more bolt starting at the headstock end.



4. Position lever under main bed and position the location hole at the end of the lever in the bush pin. Slowly pull the lever down applying sufficient pressure as the headstock moves up away from the bed. With your other hand, support the headstock by the index knob and gently wriggle the headstock if necessary.
5. Preferably with assistance, remove the headstock which will take the swivel pin and bush with it. Unscrew bush and pack back into the wooden box supplied or temporarily lie on its side (with control unit facing up) with something laid down to protect the paintwork
6. Again with assistance, return the new headstock onto the lathe bed. The bush or lever will not be required for this. Align the swivel pin so the hole lines up with the headstock lock pin hole (at outrigger end) before the headstock is lowered into position.
7. Swivel the lathe out again a few degrees so access to under the bed can be made. Screw in the retaining nut and washer and refasten the lathe to its stand or work bench.

Headstock Extraction Lever

Safe practises should always be employed to ensure the Health and Safety of yourself, employees and customers (if applicable) Refer to product manuals, exploded drawings and our website if further assistance is required, or contact us on service@teknatool.com