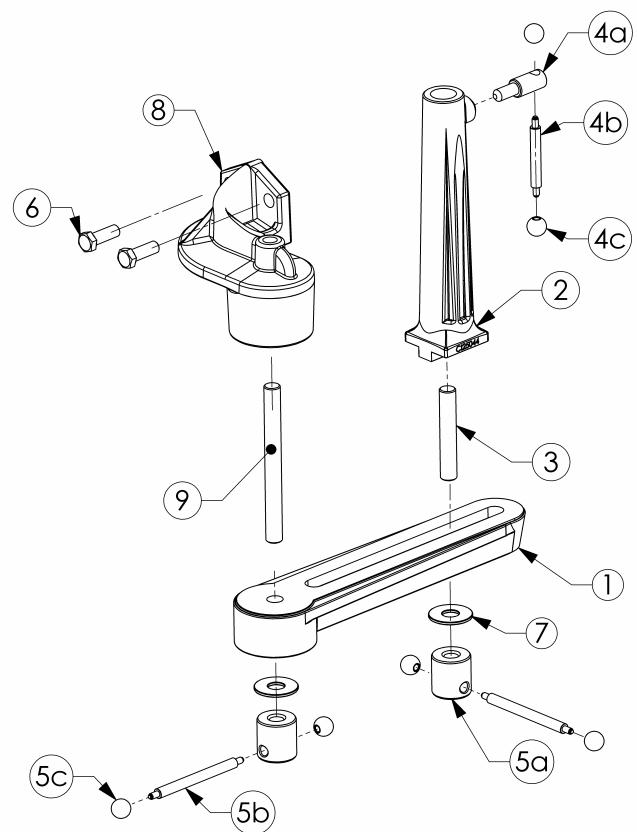


For safety reasons please carefully read and understand these instructions.

The Nova Outrigger is designed to fit and be used only with the Nova Woodlathe. Use of this outrigger on other lathes could cause a malfunction and risk of serious injury. If you are unsure of the use or application of this accessory contact the technical manager of Teknatool International or your reseller.

Thank you for purchasing the Nova Outrigger, this unit will allow you to greatly increase your turning capacity allowing you to turn larger items.



Parts List:

Part	Code	Description	No
1	25043	Cast Iron Outrigger Arm	1
2	25044	Cast Iron Outrigger Post	1
3	25011	M16x95mm Threaded Bar	1
4	24057	Teelock Unit	1
	4a 24026	Teelock Body	1
	4b 25001	85mm bar threaded end	1
	4c 865913	Threaded ball knobs	2
5	25027	Tommy Bar Unit	2
	5a 25004	Tommy Bar Nut	2
	5b 25010	125mm bars threaded each end	2
	5c 865913	Threaded ball knobs	4
6	SZ1235	M12x35 set screws ZP	2
7	FWH16	M16x34 washer ZP	2
8	25042	Cast Iron Outrigger Bracket	1
9	25005	M16x165mm threaded bar ZP	1

ASSEMBLY INSTRUCTIONS:

- Assemble the Tommy Bar unit as per the illustration (using parts 5A, 5B and 5C).
- Assemble the Teelock Body units as per the illustration (using parts 4A, 4B and 4C)
- Screw the M16x165mm threaded bar (part 9) into the bracket (part 8) from the cupped side of the casting, until the threaded bar is flush with the top of the bracket.
- Position the cast iron bracket (part 8) to the bolt holes of the headstock end of the Nova Woodlathe bed. Secure with the two M12x35 set screws (part 6). Please note; there are two further screw positions on the cast iron bracket. If required, these can be used to bolt the unit to bench. To do this you will need to shift the lathe back approximately 50 - 60 mm (2" - 2.5") on the bench top.
- Slide the hole of the outrigger arm (part 1 - machined side face up) through the threaded bar that is protruding from the bracket. Secure and tighten using parts 7 and 5A, respectively.
- Wind the 95mm threaded bar (part 3) up into the bottom of the cast iron post (part 2) until it can not go further; you may wish to use a little Loctite to hold the parts together (Loctite is a locking compound for threads). Slot the unit into the parallel slot of the outrigger arm, slide the post along the entire length of the arm to test that the unit is moving freely. Return the unit to the location of the arm that you wish to work from and secure with the following fastenings - parts 7 and 5A in this order and tighten.
- Lock your Nova Woodlathe Toolrest in place with the Teelock unit (part 4). You are now ready to use your Nova Outrigger.

Note: To achieve maximum diameter with the outrigger the headstock of your Nova Woodlathe needs to be swivelled to the 90° position.

TEKNATOOL INTERNATIONAL LIMITED
7D Dallan Place, Albany, Auckland, New Zealand 0632

Phone: 64 – 9 – 477 – 5600
Fax: 64 – 9 – 477 – 5601
Email: sales@teknatool.com

Website: www.teknatool.com